

VIDEOCADE 5001 AMAZING MAZE/TIC-TAC-TOE OPERATING INSTRUCTIONS

Insert Videcade 5001 into the Professional Arcade and press the Reset button to get the game selection on your television screen.

AMAZING MAZE (1 to 2 players)

Press (1) on the keypad to play AMAZING MAZE. The Professional Arcade will ask you to:

"ENTER # OF PLAYERS"

Enter (1) . . . Use hand control #1 and play against the Professional Arcade.

Enter (2) . . . Two player, using hand controls #1 and #2.

After entering the number of players, the Professional Arcade will ask you to:

"ENTER MAX SCORE"

When entering a score of less than 10, you must enter (=) to start play.

The object of AMAZING MAZE is to manipulate a cursor through a maze before your opponent does so by using the joystick. There is only one path through each maze.

After entering the maximum score, the Professional Arcade will ask you to enter the degree of difficulty of the maze by entering:

1 — Easy 2 — Medium 3 — Hard

The degree of difficulty is gauged by the intricacy of each maze.

After the degree of difficulty has been entered, the Professional Arcade will tell you to:

"GET READY"

At this point you will observe some activity going on at the bottom of your television screen. This is the actual pattern of the maze forming. When this pattern is complete, the maze will appear.

Player #1 will control the red cursor and must manipulate it to the other side of the screen to the point where the blue cursor started from. The first player to reach the finishing area will receive one point and the path through the maze will appear.

HAND CONTROLS

Joystick Manipulates cursor through maze.

Knob No function.

Trigger (Player #1) Advances to next maze.

Player # 1 must press the trigger to advance to the next maze.

TIC-TAC-TOE (1 or 2 players)

Press (2) on the keypad to play TIC-TAC-TOE. The Professional Arcade will ask you to:

"ENTER # OF PLAYERS"

Enter (1)—Use hand control #1 and play against the Professional Arcade.
Enter (2)—Two players using hand controls #1 and #2.

After entering the number of players, the Professional Arcade will ask you to:

"ENTER MAX SCORE"

When entering a score of less than 10, you must enter (=) to start play.

Player #1 controls the red X Player #2 controls the blue □

HAND CONTROLS

Joystick . . Moves symbol to desired position.

Knob . . . No function.

Trigger . . Once symbol is moved into desired position, press trigger.

Player #1 must press trigger to advance to next game.

Programmed by: Bill Jahnke

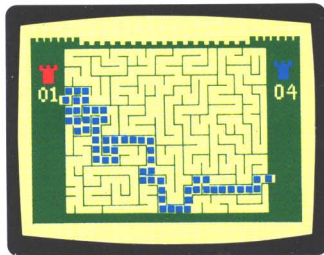
MANUFACTURED BY:

Bally Consumer Products Division

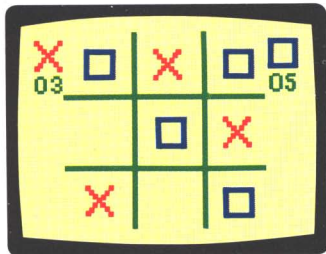
Bally Manufacturing Corporation

10750 W. Grand Avenue, Franklin Park, IL 60131

Bally[®] PROFESSIONAL VIDEOCADE[™] 5001



AMAZING MAZE



TIC-TAC-TOE